

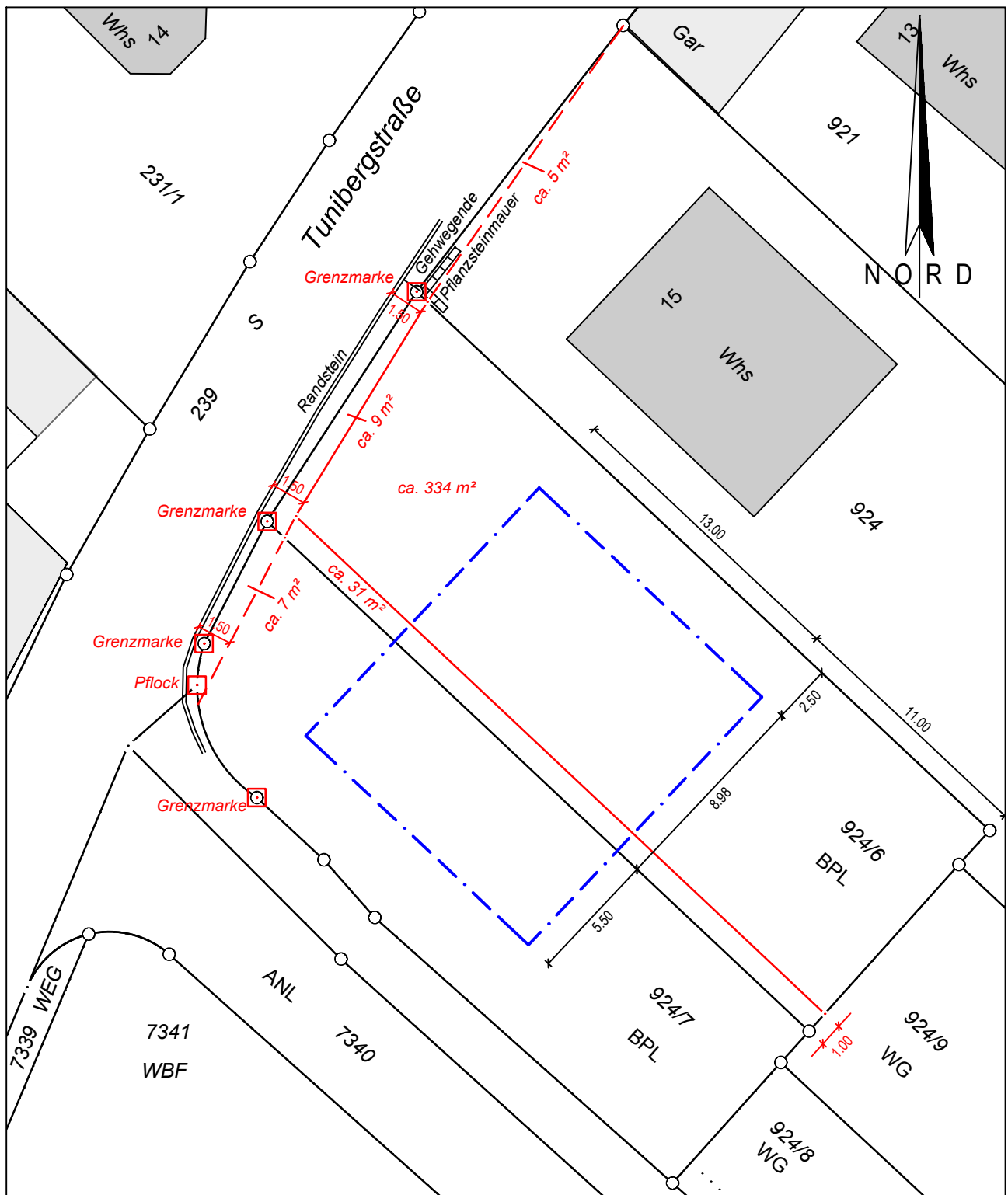
LAGEPLAN

Maßstab = 1:250


Gemarkung Gottenheim

Flurst. Nr. 924/6

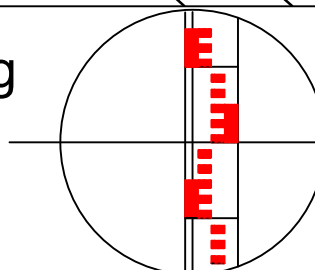
Fläche 374 m²



geplante Flurstücksteilung

 geplante Grenze

Freiburg, den 09.11.2020



VERMESSUNGSBÜRO
RAPPOLD & PARTNER

Beratende Ingenieure BDB
Ziegelhofstraße 220

79110 Freiburg/Lehen

Telefon (0761) 81099 Telefax (0761) 82099

www.rappold-partner.de